

## CÉZANNE GHOST **euroflex** A TOUCH OF SHADE

Tenda a caduta verticale guidata da cavetti da 4 mm inox. Può avere anche l'aggancio magnetico nella parte inferiore che permette di mettere in trazione il tessuto. Le dimensioni massime sono 450 cm di larghezza e 400 cm di altezza.

Vertical drop awning with inox cable guides 4 mm thick. Optional magnetic hook kit to put underside. It allows to tension the the fabric. Max. size 450 cm width x 300 cm height.

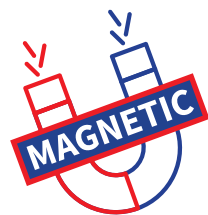
Vertikale Fallmarkise mit 4 mm dicken Inox-Kabelführungen. Optionales Magnethakkit zum Aufsetzen auf die Unterseite. Es ermöglicht das Spannen des Stoffes. Max. Dimension 450 cm Breite x 300 cm Höhe.

Store à descente verticale avec guide-câbles en inox de 4 mm d'épaisseur. Kit de fixation magnétique en option à placer au bas de la store. Il permet de tendre le tissu. Dimension max. 450 cm largeur x 300 cm hauteur.

Toldo vertical con guías de cable inox de 4 mm de espesor. Kit de gancho magnético opcional para colocar en la parte inferior. Permite tensar la tela. Máx. medidas 450 cm ancho x 300 cm alto.

Toldo vertical com guias para cabos em inox com 4 mm de espessura. Kit de gancho magnético opcional para colocar no lado do útero. Permite tensionar o tecido. Max. dimensões 450 cm de largura x 300 cm de altura.

# CÉZANNE GHOST



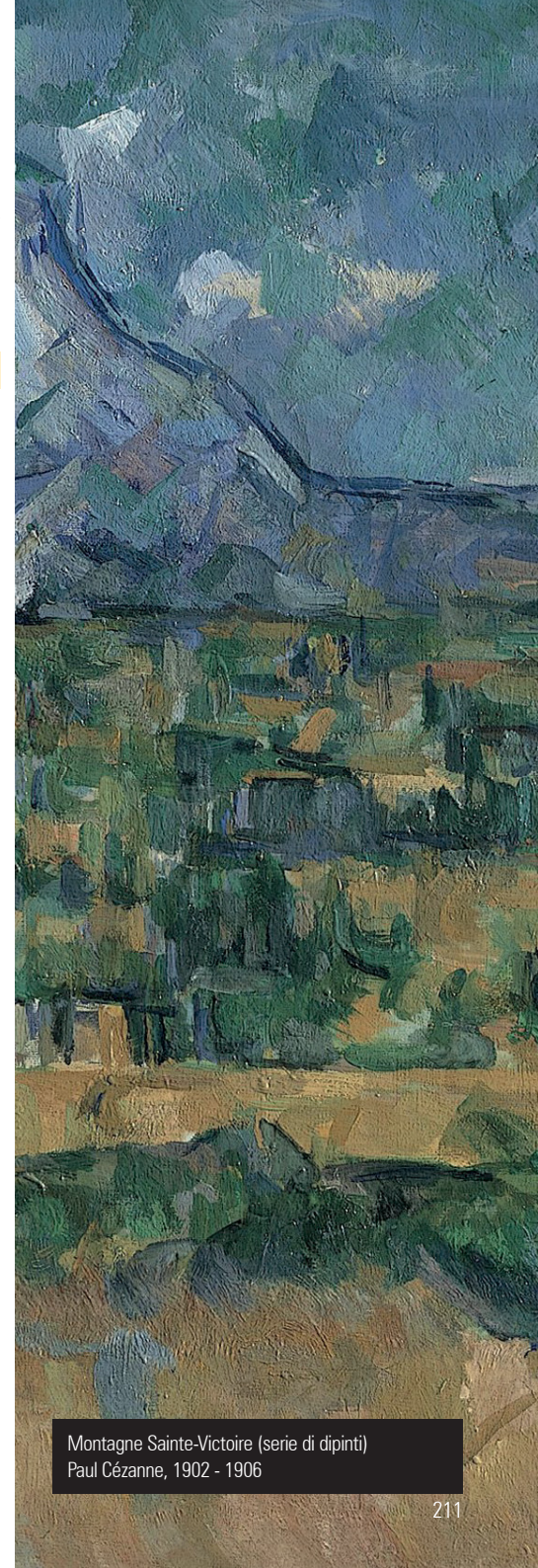
larghezza max | max width cm | Max. Breite cm  
largeur max cm | ancho máx cm | largura max cm

500 cm

altezza max | max height | maximale Höhe  
hauteur max | salda máx | saliência máxima

400 cm

AVAILABLE COLOURS



Montagne Sainte-Victoire (serie di dipinti)  
Paul Cézanne, 1902 - 1906

**TECHNICAL DATA**

larghezza width Breite largeur ancho largura	altezza height Höhe hauteur alto altura	tubo avvolgitore roller tube Tuchwelle tube enrouleur tubo de enrollle tubo enrollador
500 cm 500 cm	400 cm 400 cm	Ø 70 mm Ø 78 mm

**WIND RESISTANCE CLASS ACCORDING TO THE EUROPEAN STANDARD UNI EN 13561**

Classe di resistenza al vento secondo la normativa europea UNI EN 13561  
 Wind resistance class according to the European standard UNI EN 13561  
 Windwiderstandsklasse nach der Europäischen Norm EN 13561

Classe de résistance au vent conformément à la réglementation européenne UNI EN 13561  
 Clase de resistencia al viento según la Normativa Europea UNI EN 13561  
 Classe de resistência ao vento de acordo com as normas europeias UNI EN 13561

larghezza width Breite largeur ancho largura	altezza height Höhe hauteur alto altura	classe class Klasse classe clase classe	tubo avvolgitore roller tube Tuchwelle tube enrouleur tubo de enrollle tubo enrollador
450 cm	400 cm	1	Ø 78 mm



wall/ceiling bracket



cylindre support & PVC tip for cable



tensioning register



lock barrel



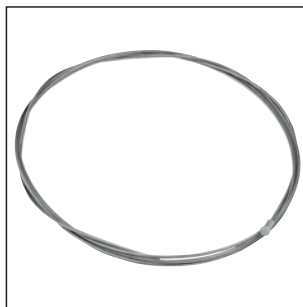
bottom wall bracket



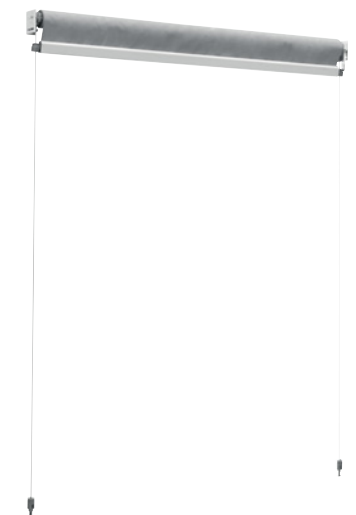
callas terminal bar



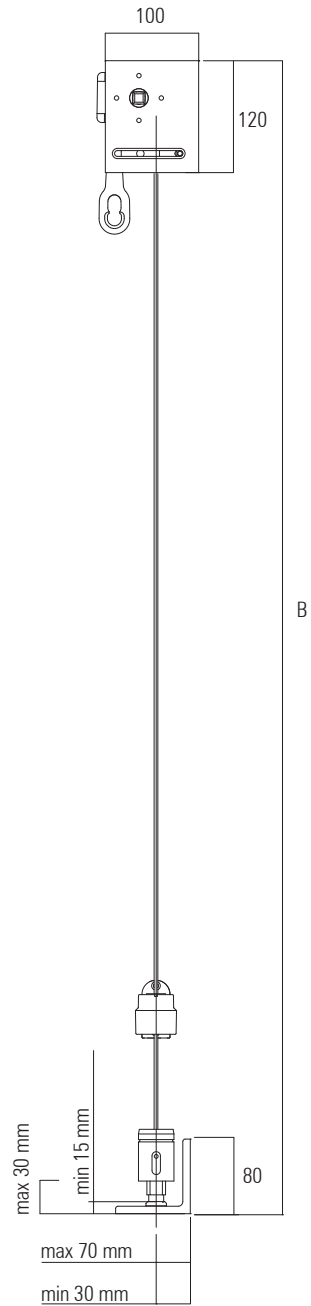
complete set



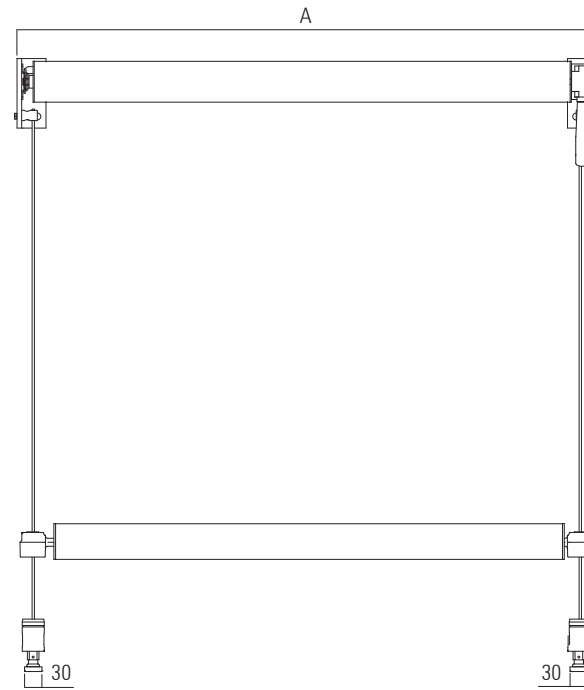
cable



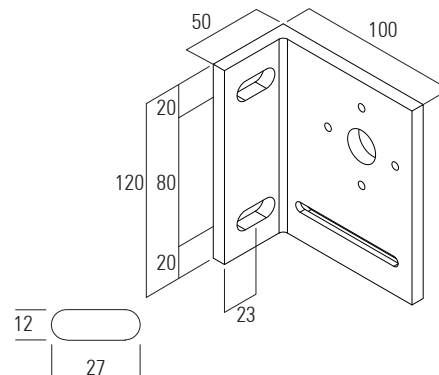
## AWNING SIZES



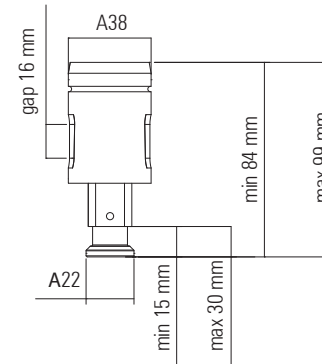
## AWNING SIZES



### WALL / CEILING BRACKET



### FOOT



### BOTTOM WALL BRACKET

